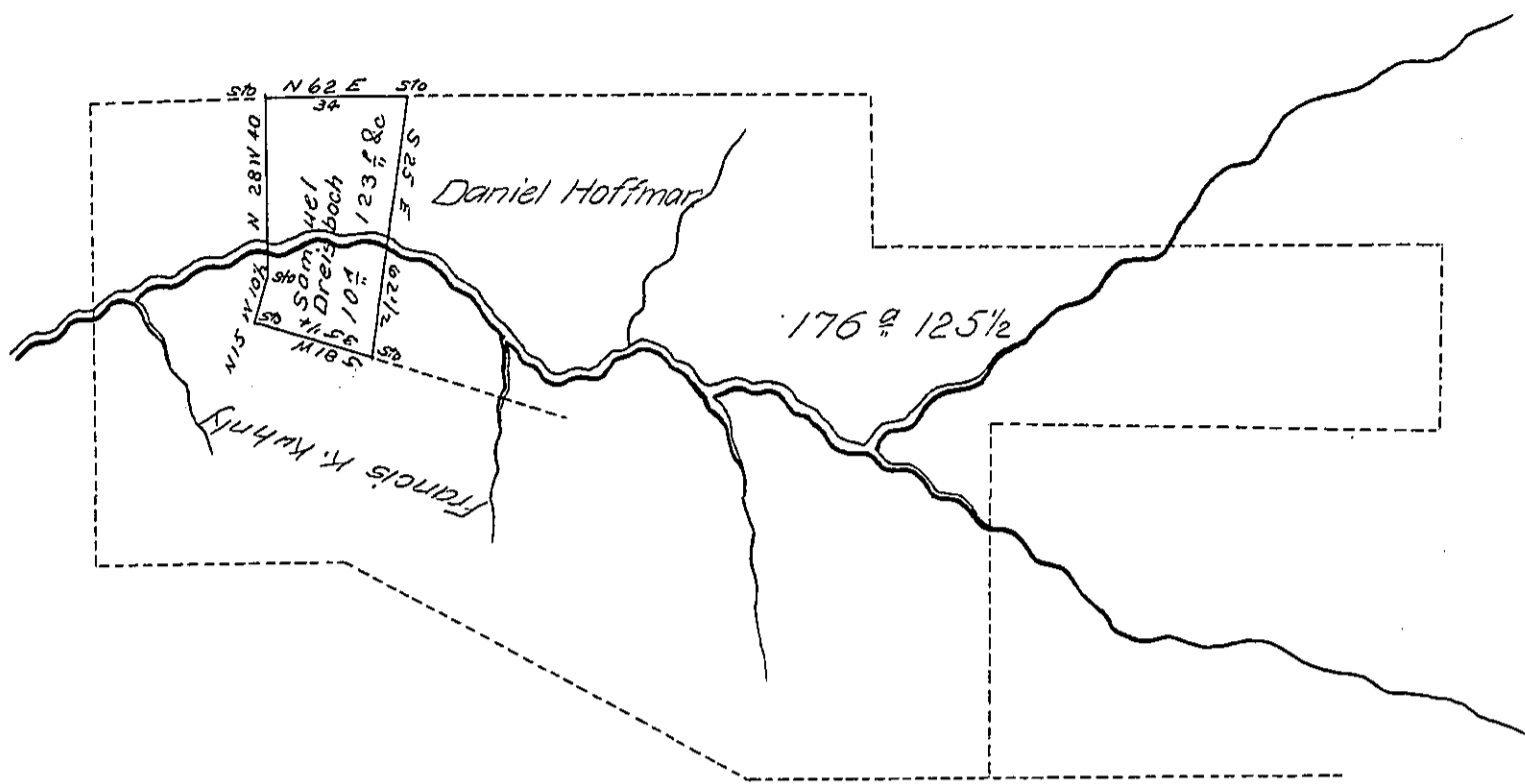


Frederick Salsemon



Situate in Brunswick Township Schuylkill County Containing  $10 \frac{1}{2} \text{ ac}$  allowance of six per Cent for Roads & part of  $176 \text{ ac } 125 \frac{1}{2} \text{ ac}$  allow. which was surveyed to Michael Probst by a Warrant granted to him dated the ~~11th~~<sup>19th</sup> day of November AD. 1766. Now surveyed for Samuel Dreisboch October the 24<sup>th</sup> AD 1821 By  
 To Samuel Cochran Esq. In Dreher D.S.  
 Surveyor Genl of Penna.

IN TESTIMONY that the above is a copy of the original remaining on file in the Department of Internal Affairs of Pennsylvania, made conformably to an Act of Assembly approved the 16th day of February, 1833, I have hereunto set my Hand and caused the Seal of said Department to be affixed at Harrisburg, this twelfth day of July 1906

*Isaac B. Brown*  
 Secretary of Internal Affairs.